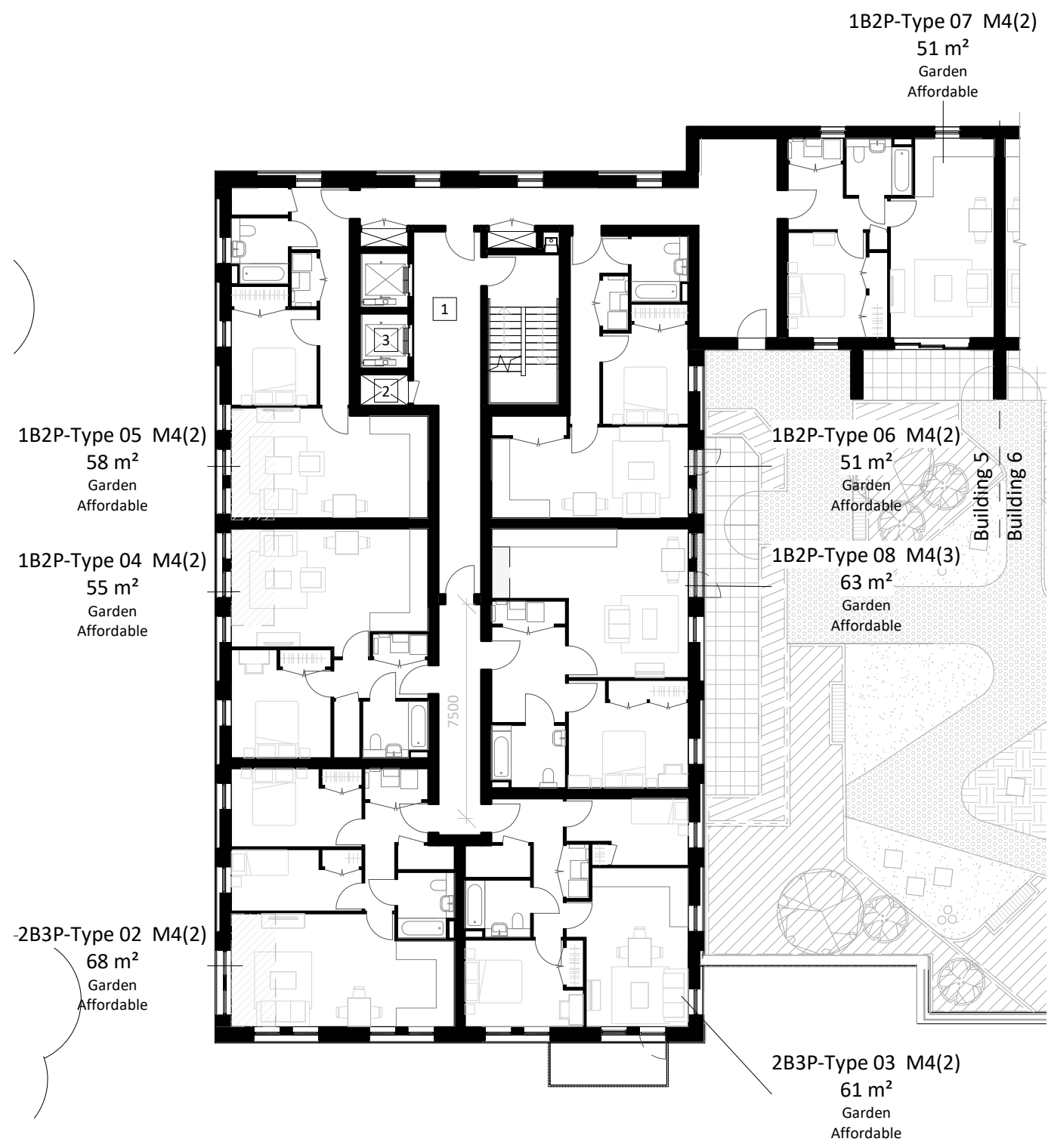
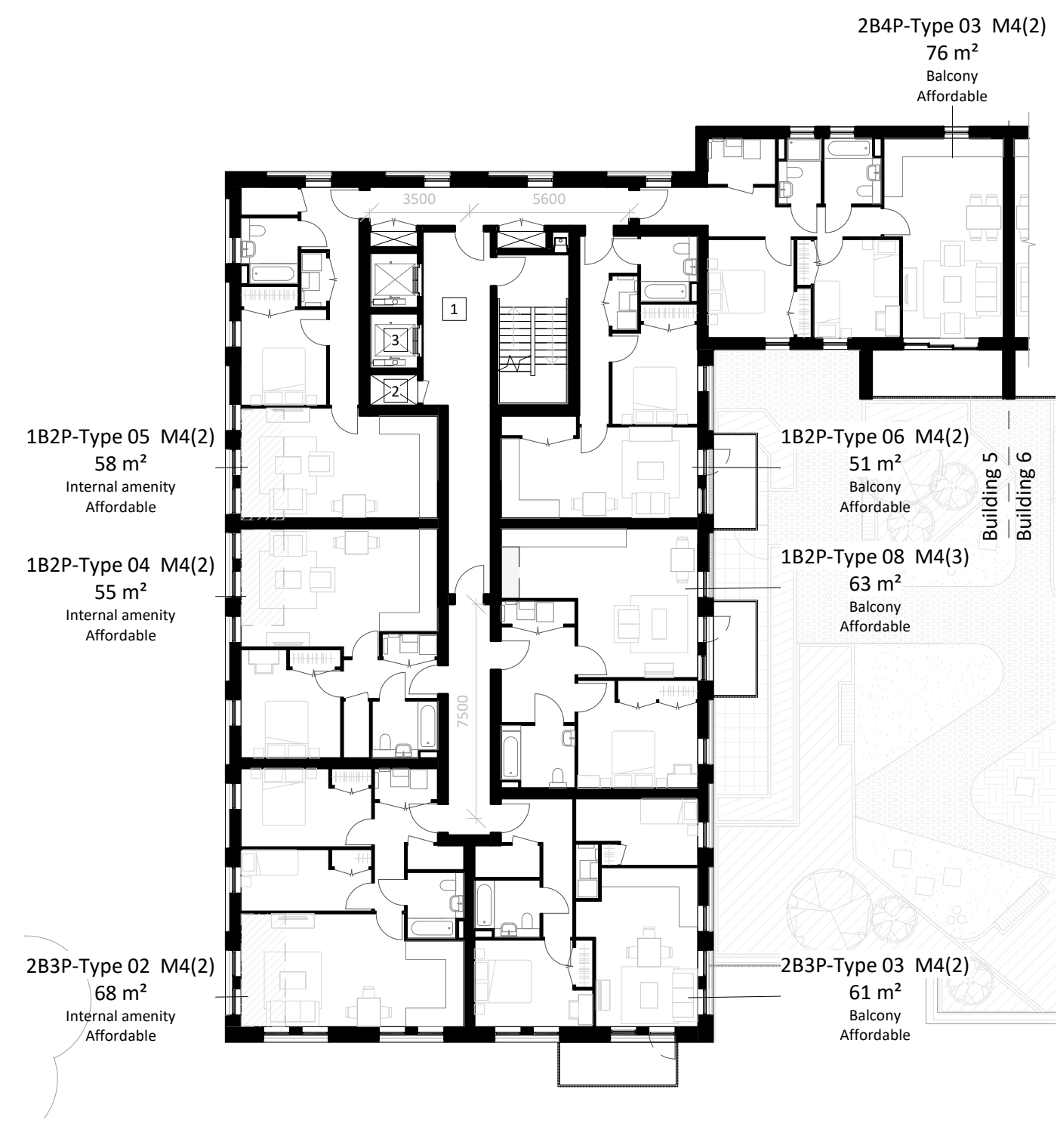


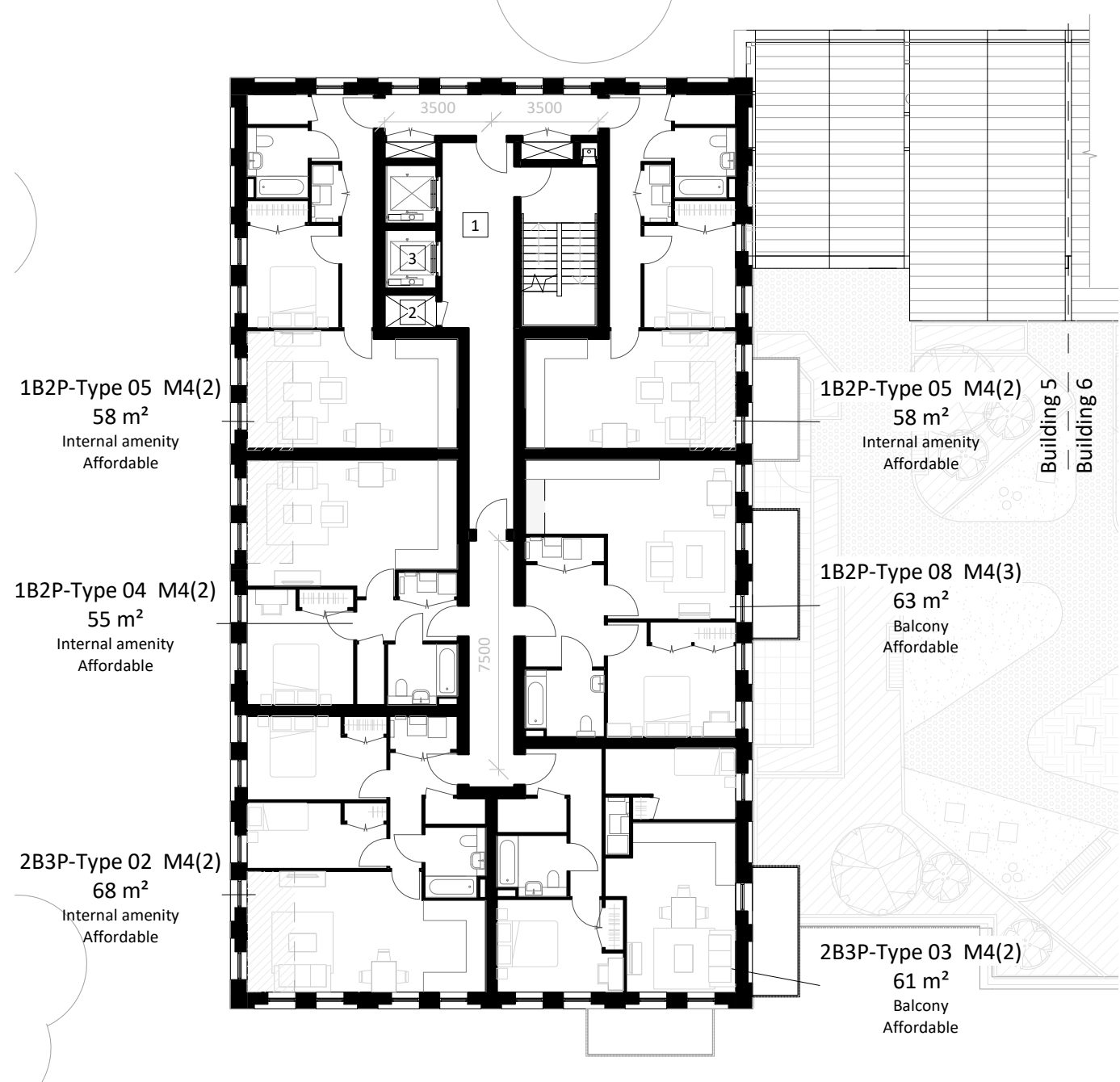
1 Building 5 - Ground Floor Plan
1 : 200



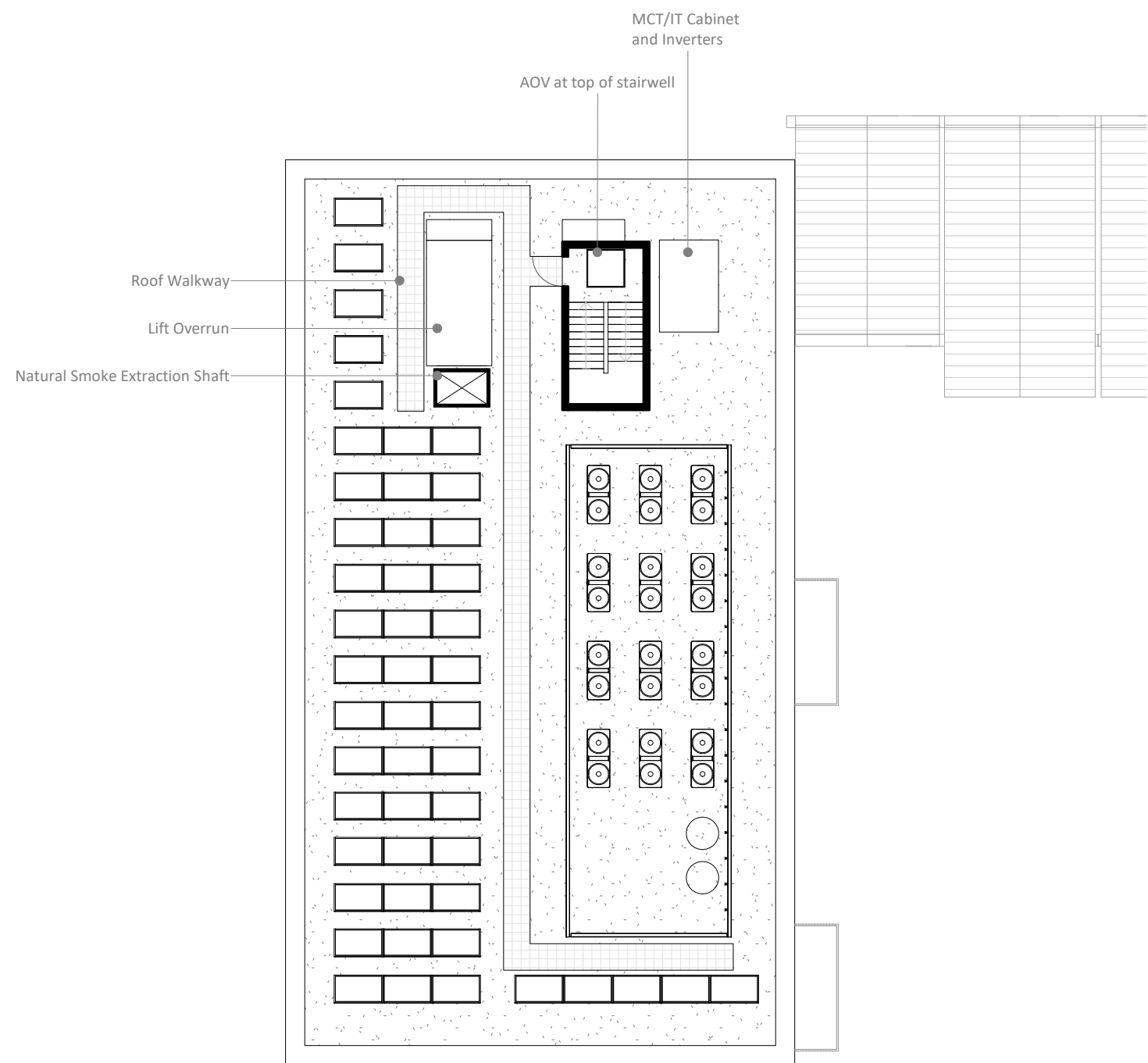
2 Building 5 - First Floor Plan
1 : 200



3 Building 5 - Second to Fourth Floor Plan
1 : 200



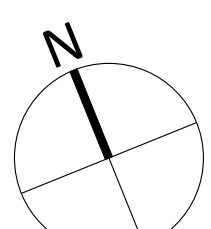
4 Building 5 - Fifth to Tenth Floor Plan
1 : 200



5 Building 5 - Roof Plan
1 : 200

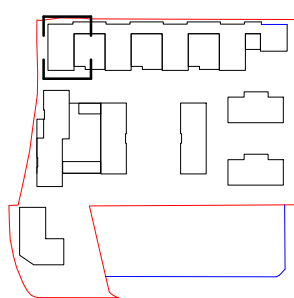
NOTES
CONSULTANTS
- Refer to highways consultant's drawings for details
- Refer to landscape consultant's drawings for details
- Landscaping layout is indicative only

AREAS
- Refer to area schedule



Rev	Notes	Date	By	Auth
P1	DRAFT Planning Issue	19-08-30	CS	FvB
P2	Issue for Planning	19-09-05	CS	FvB
P3	Planning amendment	19-09-24	CS	FvB
P4	Update for GLA Application	20-04-07	OT	JBC
P5	GLA Agreed Changes	20-07-23	CS	MG
P6	substitutions	20-07-24	CS	MG

KEY PLAN



0m 4m 8m 12m 16m 20m
VISUAL SCALE 1:200 @ A1

LEGEND: FIRE SECURITY

- 1 Sterile ventilated staircase lobby
- 2 AOV / Smoke shaft (min. 1.5m² section)
- 3 Firefighting lift
- 4 Mechanical smoke extraction duct (min. 0.6m² section)
- 5 Natural air inlet duct

ColladoCollinsArchitects

17-19 Foley Street
London W1W 6DW
T 020 7580 3490
F 020 7580 2917
info@colladocollins.com
www.colladocollins.com

Date: 27/07/17
Drawn By: VC
Checked by: JBC
Scale @ A1: As indicated
Scale @ A3: 1 : 400
CAD File No:

Inland Homes
Hillingdon
Building 5 - Floor Plans

PLANNING
19011

P1(05)-100

P6
Revision